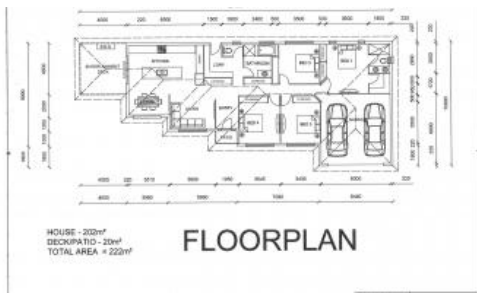


Sold



111 Horsman Rd, Warwick



NEW HOME PLANS AVAILABLE

1,009 sqm close to level vacant block of land

Very good area

Builder has house plans for this land

Easy access to parks, schools and main street

Some SDRC underground infrastructure limits building area

First home buyers need to ACT NOW!!!!

The above information provided has been furnished to us by the vendor/s. We have not verified whether or not that information is accurate and do not have any belief in one way or the other in its accuracy. We do not accept any responsibility to any person for its accuracy and do no more than pass it on. All interested parties should make and rely upon their own inquiries in order to determine whether or not this information is in fact accurate.

1,009 m2

Price SOLD for \$85,000

Property Type Residential

Property ID 549

Land Area 1,009 m2

AGENT DETAILS

OFFICE DETAILS

Warwick

82 Palmerin Street Warwick QLD

4370 Australia

07 4661 1227



**first
national**
REAL ESTATE | Warwick